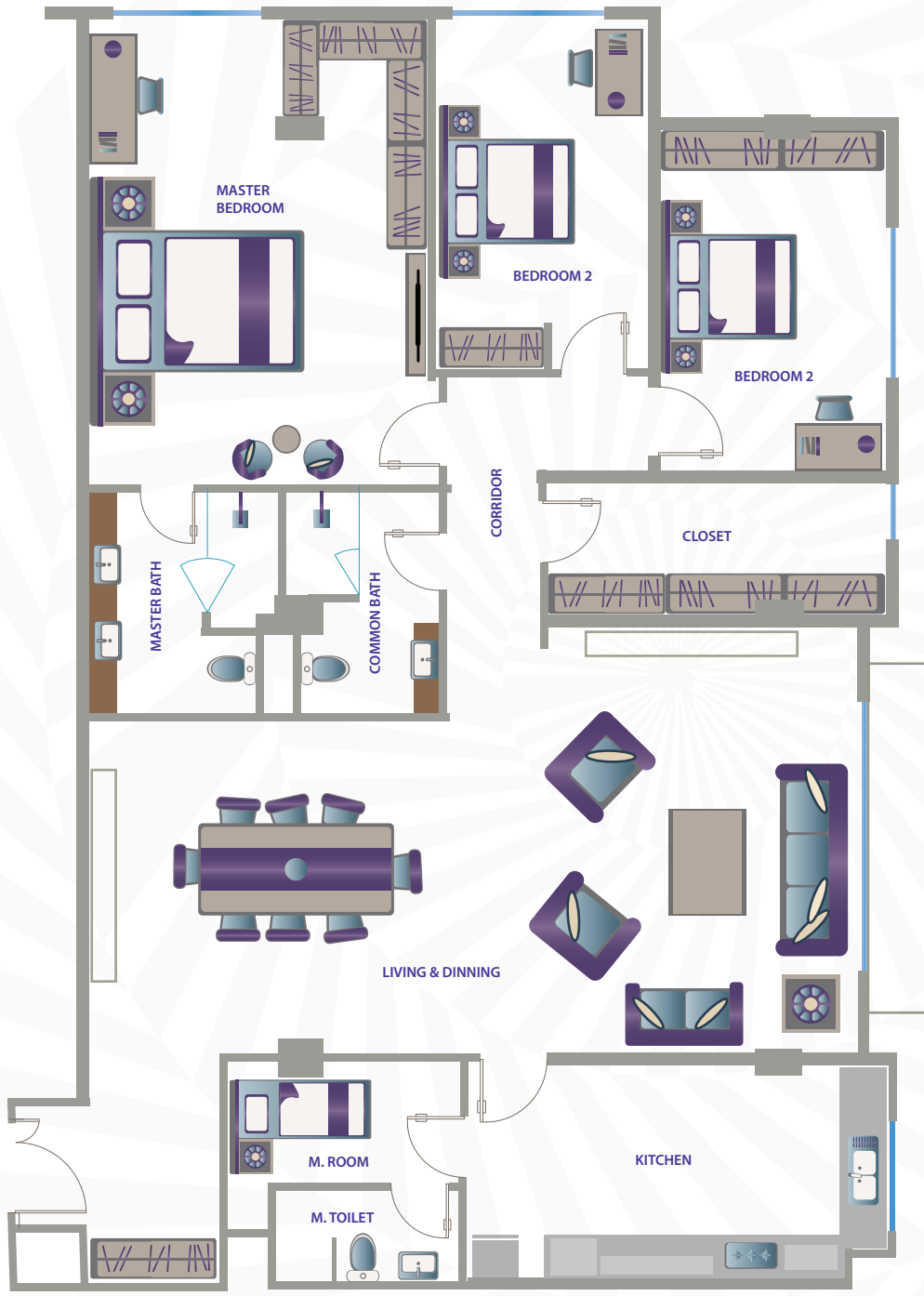


**TYPICAL FLOOR  
FOUR BEDROOM  
TYPE C-2**



**THE LIVING SPACE**

**TOTAL SPACE**  
229.1 m<sup>2</sup>

**LIVING & DINNING ROOM**  
58.33 m<sup>2</sup>

**MASTER BEDROOM**  
27.93 m<sup>2</sup>

**MASTER BATHROOM**  
6.65 m<sup>2</sup>

**BEDROOM ONE**  
13.76 m<sup>2</sup>

**BEDROOM TWO**  
12.88 m<sup>2</sup>

**COMMON BATHROOM**  
5.31 m<sup>2</sup>

**KITCHEN**  
15.79 m<sup>2</sup>

**CORRIDOR**  
6.03 m<sup>2</sup>

**CLOSET**  
7.8 m<sup>2</sup>

**MAIDS ROOM**  
5.07 m<sup>2</sup>

**MAIDS TOILET**  
2.91 m<sup>2</sup>